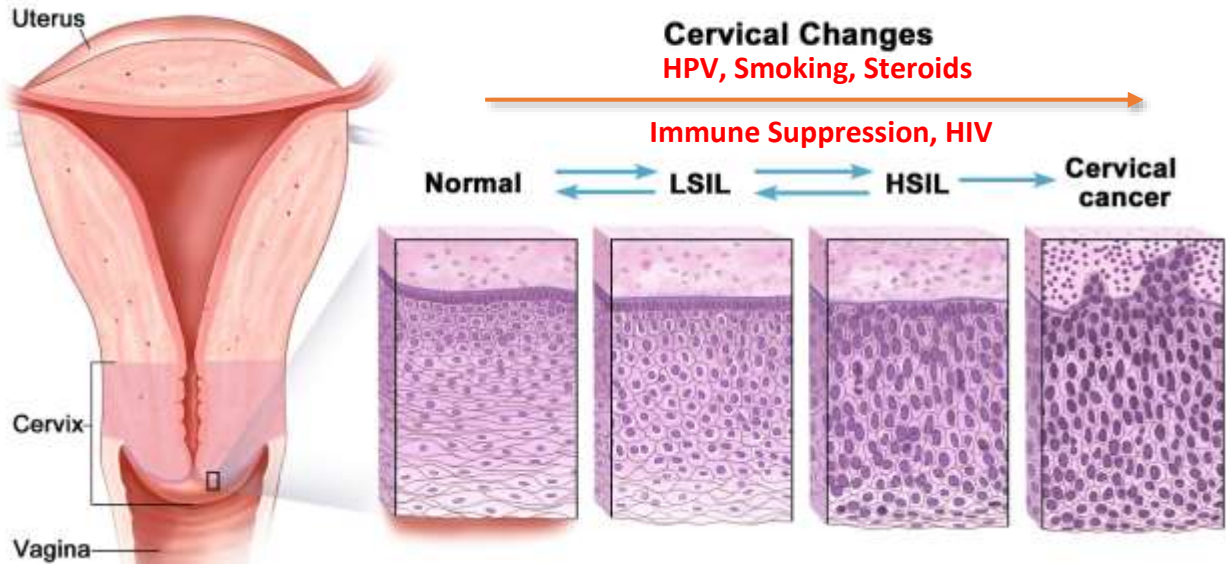
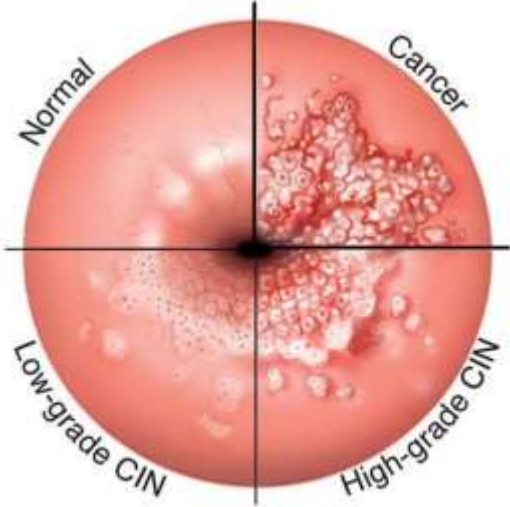


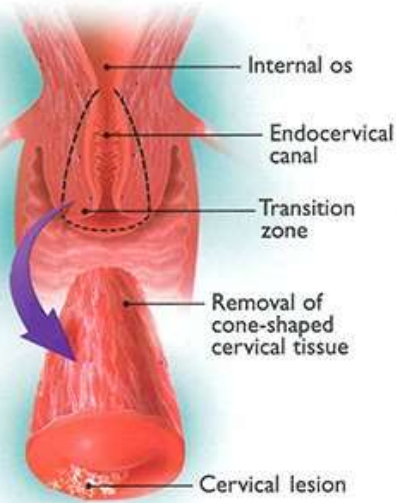
Abnormal Pap Smear



Colposcopy



CONE BIOPSY

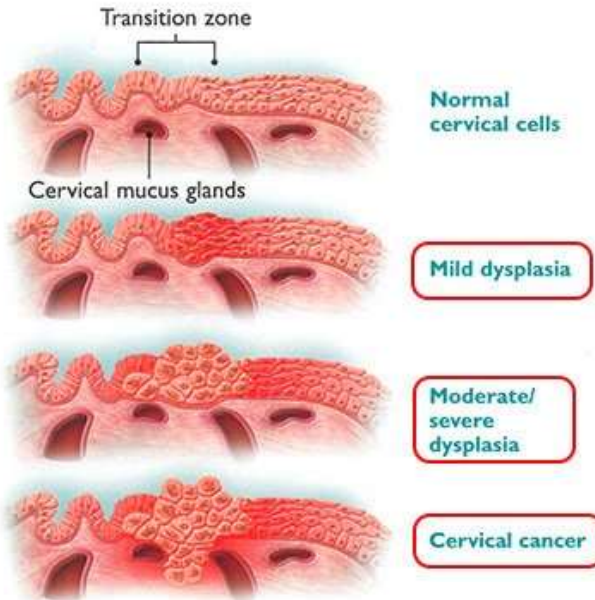


An abnormal Pap test can be classified in 2 ways:

LSIL (low-grade squamous intraepithelial lesion): early changes in the size and shape of cells. These are considered mild abnormalities usually caused by HPV infection.

HSIL (high-grade squamous intraepithelial lesion): More marked changes in the size and shape of abnormal cells. These cells look very different from "normal" cells and have a greater chance of progressing to **invasive cancer** (see right).

NORMAL AND ABNORMAL CERVICAL CELLS



LEEP